



Wheat Harvest Evaluation Using The R7 Tool

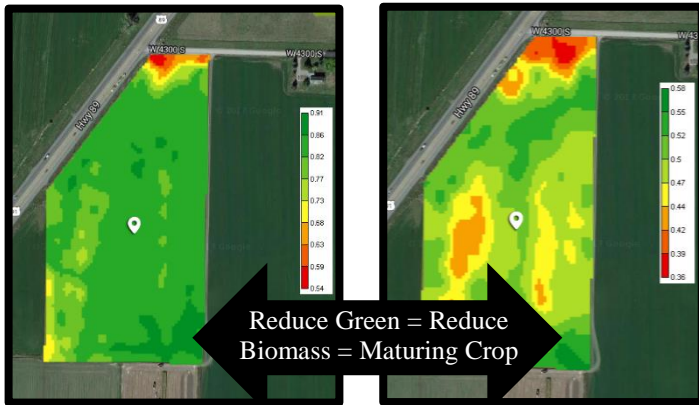
Combines across that state have started harvest on grain crops. R7 Field Monitoring Tool (FMT) in combination with the vigor index and in-season imagery can be utilized to evaluate grain stands by indicating maturity of the crop. Below, is an example of wheat fields that harvest was determined after the utilizing the R7 Tool.



Key Observations:

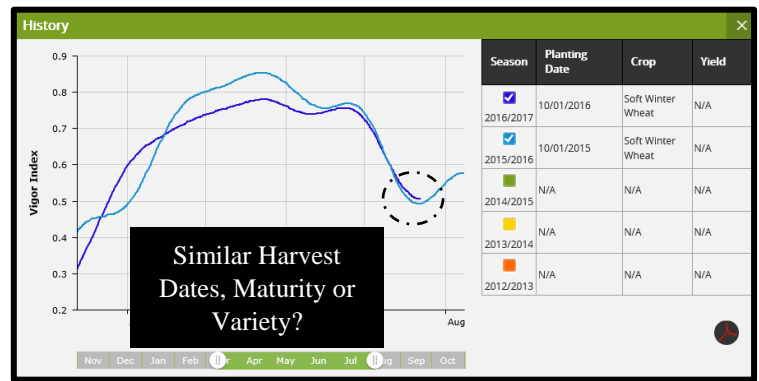
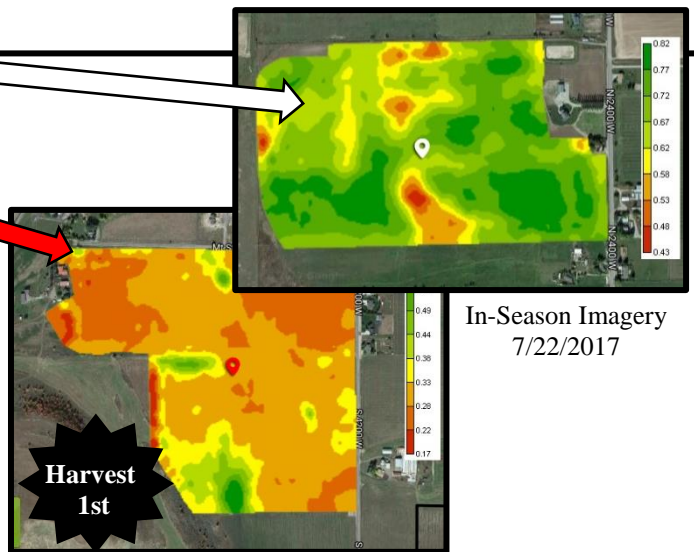
- Use the FMT to compare same crop fields. To help indicate harvest time.
- Use Vigor Index to compare current growing season to past. To help discover yield limiting factors.
- Use In-Season Imagery to watch your crop progress and mature throughout the season. To help indicate harvest time and discover areas that are leading to yield limiting factors.

Use the FMT tool to tell you how your grain crops are trending. Trends are the difference between the average across all fields mapped as the same crop. During maturity and dry down the lower trending fields will be maturing quicker and will be ready to harvest first.



In-Season Imagery 6/27/2017

In-Season Imagery 7/13/2017



Use your Vigor Index and In-Season Imagery to compare past year to current years to help dictate yield limiting variables. Vigor is the difference (increase or decrease) in biomass based off, of the previous day.

Talk with your local trusted advisor about how using the Field Monitoring Tool can help you plan your next move to drive higher yields this coming cropping season.